



# PARTNER WITH PURPOSE

2026|27



# HELLO!

The Australian POTS Foundation is the national voice for people living with Postural Orthostatic Tachycardia Syndrome. We work to reduce diagnostic delays, improve equitable access to care, and strengthen the evidence base by placing lived experience at the centre of everything we do. Our efforts span health policy, clinician education, research, and national events such as our community and health professional conference.

As a partner, you'll contribute directly to this mission while gaining visibility among our vast and growing community. It's an opportunity to align with a cause that matters, share your expertise, and connect with people who value action, innovation, and meaningful change in healthcare.

# VISION STATEMENT

‘At the Australian POTS Foundation, our vision is simple yet urgent: to improve the lives of those living with Postural Orthostatic Tachycardia Syndrome through advocacy, education and practical support.

We are committed to building partnerships that drive awareness, accelerate research and empower individuals with the tools, knowledge and confidence to manage their condition.

Together with our community and collaborators, we are working towards a future where no one faces POTS alone and where every person affected can access the care, recognition and respect they deserve’.

**Dr. Marie-Claire Seeley**  
CEO | Founder



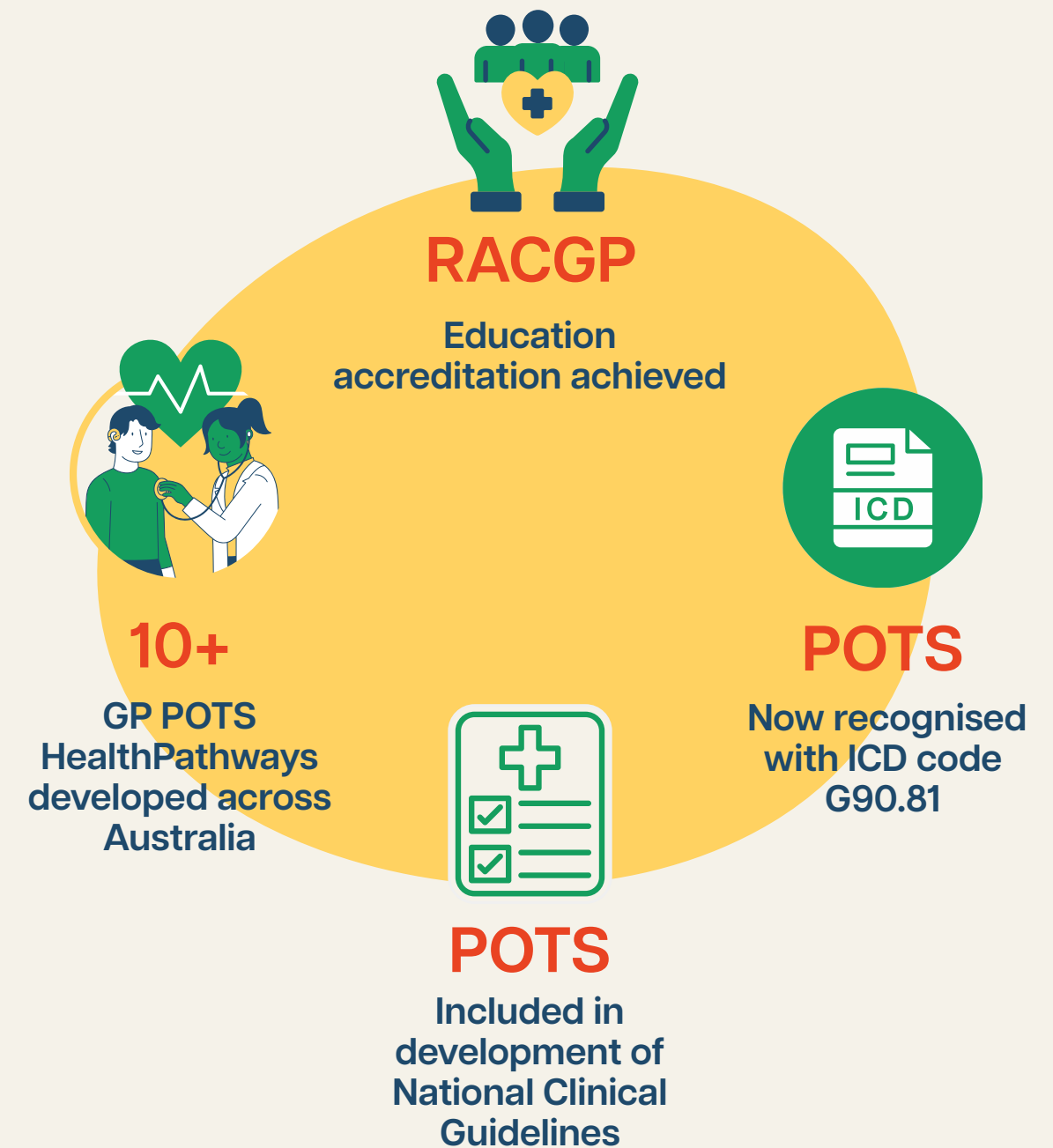
“Through our partnership with APF, we reached an audience that truly benefits from what we offer. Their endorsement gave our product a trusted pathway into the homes of people who need it. Their professionalism, passion, and grassroots reach make them an ideal partner in both impact and integrity.”

Cale, Co-Founder @ Sodii Hydration  
Platinum Partner 2025



# OUR REACH & IMPACT

(in 24/25 financial year)



# PLATINUM PARTNERSHIP



## Inclusions:

- Logo on Partner page with link to own page
- Keynote naming rights at conference
- 8 x Dedicated social media posts
- Editorial in EOFY & seasonal newsletters
- Content series
- Hero branding on event collateral
- Member onboarding email
- Opportunity to be profiled as a practitioner/industry partner in newsletter and/or social media, with potential to contribute to clinical, research or industry panels or workshops at APF events (at APF's discretion)

## INVESTMENT

# \$10,000

## Discounted Biennial Conference Opportunities

Year-round partners receive exclusive access to significantly discounted options for:

- Conference display spaces
- Conference and Gala Dinner tickets

# GOLD PARTNERSHIP



## Inclusions:

- Large-size logo on Partner page
- 6 x social media posts
- Logo & link in EOFY & seasonal newsletters
- At-Event branding
- Member onboarding email
- Official APF endorsement
- Opportunity to be profiled as a practitioner/industry partner in newsletter and/or social media, with potential to contribute to clinical, research or industry panels or workshops at APF events (at APF's discretion)

# INVESTMENT

# \$8,500

## **Discounted Biennial Conference Opportunities**

Year-round partners receive exclusive access to significantly discounted options for:

- Conference display spaces
- Conference and Gala Dinner tickets

# SILVER PARTNERSHIP



**INVESTMENT**  
**\$5,500**

## **Inclusions:**

- Medium-size logo on Partner page
- 4 x social media posts
- Logo & link in EOFY + seasonal newsletters
- Member onboarding email
- Opportunity to be profiled as a practitioner/industry partner in newsletter and/or social media, with potential to contribute to clinical, research or industry panels or workshops at APF events (at APF's discretion)

## **Discounted Biennial Conference Opportunities**

Year-round partners receive exclusive access to significantly discounted options for:

- Conference display spaces
- Conference and Gala Dinner tickets

# BRONZE PARTNERSHIP



## Inclusions:

- Small-size logo on Partner page
- 2 x social media posts
- Logo in EOFY newsletter
- Member onboarding email

# INVESTMENT

# \$2,500

## Discounted Biennial Conference Opportunities

Year-round partners receive exclusive access to significantly discounted options for:

- Conference display spaces
- Conference and Gala Dinner tickets

# EDUCATION PATRON



## **Inclusions:**

- Large-size logo on Partner page
- Naming rights on APF Conference Scholarships
- Logo on start & end cards of RACGP-CPD webinars and content
- Logo on all event signage
- Opportunity to be profiled as a practitioner/industry partner in newsletter and/or social media, with potential to contribute to clinical, research or industry panels or workshops at APF events (at APF's discretion)

# INVESTMENT

# \$7,000

## **Tickets Included:**

- 3 x Conference (2 day)
- 3 x Gala Dinner
- Access to discounted additional conference/Gala dinner tickets

Opportunity to be profiled as a practitioner partner in newsletter and/or social media, with potential to contribute to clinical, research or industry panels or workshops at APF events (at APF's discretion). A discounted booth or trestle table may also be available upon request, subject to availability and alignment with the conference program.

# RESEARCH PATRON



## Inclusions:

- Large-size logo on Partner page
- Naming rights on APF Research Prize
- Logo on all event signage

## Tickets Included:

- 4 x Conference (2 day)
- 4 x Gala Dinner
- Access to discounted additional tickets

Opportunity to be profiled as a practitioner partner in newsletter and/or social media, with potential to contribute to clinical, research or industry panels or workshops at APF events (at APF's discretion). A discounted booth or trestle table may also be available upon request, subject to availability and alignment with the conference program.

# INVESTMENT

# \$4,000

# CONFERENCE OPPORTUNITIES



Our conference packages are available to current year-round partners at cost in the year of the event. If you are unable to commit to a full annual partnership but would still like to be part of the APF Community and Scientific Conference, we also offer a range of standalone sponsorship options to suit your objectives and budget.

## **Trestle Table**

### **Includes:**

- 1 x Trestle Table
- 2 x Conference Ticket (2 day)
- 2 x Gala Dinner Ticket

### **Investment:**

Corporate: \$3,000

## **Booth**

### **Includes:**

- 3m x 2m Exhibitor Booth
- 3 x Conference Tickets (2 day)
- 3 x Gala Dinner Tickets

### **Investment:**

Corporate: \$4,000

**Current partners and volunteer led Not For Profit discounted prices are available on request**

**\*Please note: Exhibition booth space is limited and will be allocated to our partners on a first-come, first-served basis. We recommend confirming your partnership early to secure your place.**

If you would like us to create a custom package to meet your specific objectives let us know - we are open to tailoring proposals for partners whose mission and message aligns with ours.

# THANK YOU

For considering partnering with

